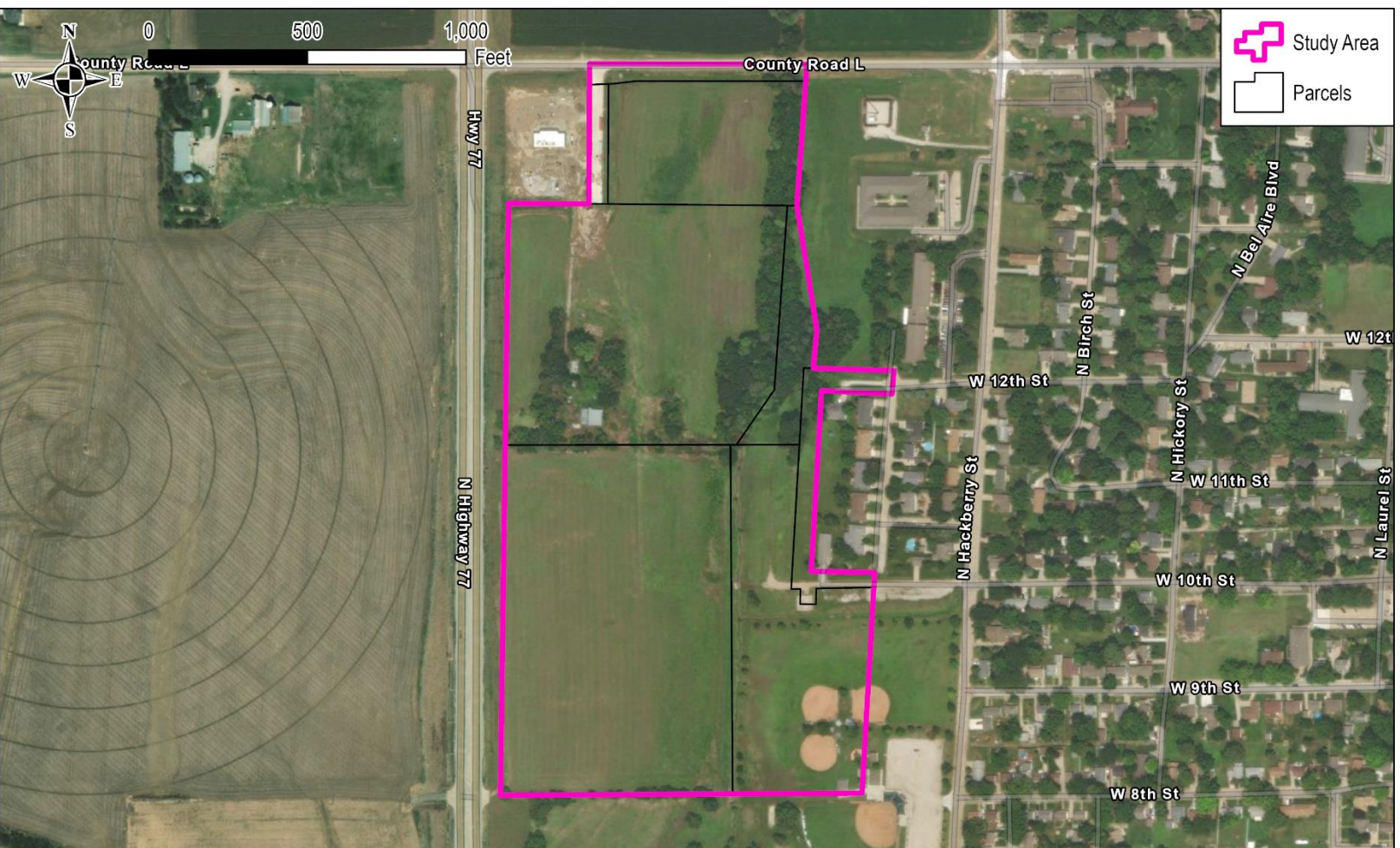



Designated Study Area

The study area as identified can be found in Figure 1. For this study, the study area will be known as the "Designated Study Area" which was reviewed for standard and blight characteristics.

Figure 1: Designated Study Area



<h2>City of Wahoo, NE</h2>	 JEO CONSULTING GROUP	<p>Created By: J. Ray; M. Frates Date: 8.2.2022 Software: ArcGIS Pro 2.9.3 File: 221460.00</p>
<hr/> <h3>West Hackberry Blight Study: Study Area</h3>		<p>This map was prepared using information from record drawings supplied by JEO and/or other applicable city, county, federal, or public or private entities. JEO does not guarantee the accuracy of this map or the information used to prepare this map. This is not a scaled plat.</p>